



# ANNUAL REPORT 2020-21



**BCEF**

Bush Children's Education  
Foundation of NSW  
ABN 74 263 035 680

Email: [info@bcef.org.au](mailto:info@bcef.org.au)  
Website: [www.bcef.org.au](http://www.bcef.org.au)  
Tel: +61 492 878 622  
PO Box 138, Lindfield NSW 2070

# TABLE OF CONTENTS

<b>Bush Children's Education Foundation of NSW</b>	<b>3</b>
Our History	3
Our Vision	3
Our Mission	3
Our Patron	
<b>Chairman's Report - Another Big Year For BCEF</b>	<b>4</b>
<b>BCEF Funding Snapshot</b>	<b>5</b>
<b>Performance Against Objectives</b>	<b>6</b>
<b>Continuing Need For BCEF Support</b>	<b>7</b>
<b>BCEF Board of Directors</b>	<b>8</b>
<b>Education, Scholarships &amp; Bursaries Committee</b>	<b>9</b>
Secondary Boarding School Support	9
University Scholarships	9
<b>Fundraising &amp; Marketing Committee</b>	<b>10</b>
Website and Social Media	10
<b>Growth Path and the Future</b>	<b>12</b>
<b>BCEF Funding Making A Difference</b>	<b>13</b>
<b>BCEF Financials FY 2021</b>	<b>14</b>
Financial Report for the Year Ended 30 June 2021	14
Statement of Comprehensive Income for the Year Ended 30 June 2021	15
Notes to the Financial Statements for the Year Ended 30 June 2021	16
<b>Directors Declaration</b>	<b>18</b>
<b>Support Us &amp; Make A Difference</b>	<b>19</b>

# BUSH CHILDREN'S EDUCATION FOUNDATION OF NSW

## OUR HISTORY

Dr Charles Huxtable, then serving with the Royal Flying Doctor Service at Broken Hill, initiated the establishment of the Bush Children's Education Foundation in 1965. He was shocked by the number of children who were not enrolled in any school and whose only contact with other children was through visits to a township. The Foundation provided funding for isolated children to board at the purpose-built Tibooburra Hostel. Other similar hostels were in far-west NSW.



## OUR VISION

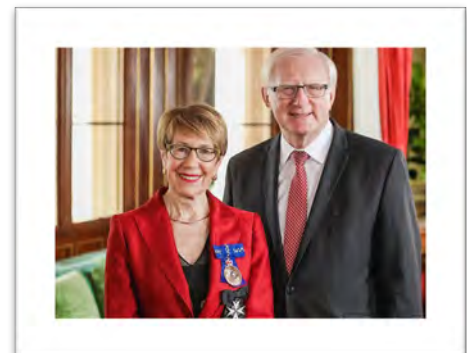
**Supporting young people in the bush whose educational opportunities are limited due to isolation and economic circumstances.**

## OUR MISSION

- To build a sustainable funding base to support our ongoing education delivery requirements.
- To ensure fair and equitable allocation of support to those identified as needing our help.
- To work with families, education, and other organisations in the bush to assist our delivery of support.
- To increase BCEF awareness, profile, and communication with all stakeholders.

## OUR PATRON

Her Excellency The Honourable Margaret Beazley AO QC is our Patron. Her Excellency expressed her keen desire to help the Foundation in its efforts to support young people in the bush. We greatly appreciate her support.



## CHAIRMAN'S REPORT – ANOTHER BIG YEAR FOR BCEF

This year has been very challenging and rewarding with the continued high volume of Rural Secondary Boarding Bursary applications and managing the difficulties of COVID-19 lockdowns and home schooling.

**With over 100 applications this year, the Board awarded 74 Bursaries to 50 families attending 13 NSW regional Boarding Schools for a total cost of more than \$140,000.**

The level of financial support for our Bursaries and University Scholarships from 2019 to 2021 has required total funding of over \$350,000.

Our Education, Scholarships & Bursaries Committee has provided an outstanding result in helping families to educate their children at rural boarding schools.

The Fundraising & Marketing Committee has done a terrific job with record numbers of donations and grants enabling us to support the massive increase in the number and value of our Secondary Rural Boarding Bursaries in the last two years.

Thank you to all Directors for the support that you have provided making the BCEF a highly functional volunteer organisation, which is helping so many young people and families in the bush.

We cannot thank enough our very generous individual and corporate donors who over many years have made our support of isolated and economically disadvantaged young people in the bush possible.

We again embarked on an advertising and marketing campaign to let people in the bush know about the availability of our bursary support through interviews on ABC "Country Hour"; Riverina and Tamworth and ABC Sunday "All Over Australia". We also advertised through 'The Land' newspaper digital edition.

We have awarded an additional Charles Sturt University scholarship this year making a total of five at Wagga Wagga, Dubbo, and Bathurst campuses. We started our CSU Scholarship Program in 2007 and have now awarded 18 scholarships with a total value of \$142,000.

My wife, Lesley, and I attended the Isolated Children's Parents' Association NSW Annual Conference in Hay this year where I made a presentation about the activities of BCEF and the availability of our Secondary Rural School Boarding Bursary and CSU Scholarship Programs.

The competition for charitable fundraising and donations today is extremely high with more than 65,000 charities and foundations registered in Australia.

We are always concerned that funds donated to support Rural Secondary Boarding Bursaries and University Scholarships are applied for this purpose and we constantly monitor our performance in this area. We continue to manage our operational expenses to keep them to a minimum and cover them by one-off specific grants or from investment income wherever possible.

It is with great pleasure that the Directors present this Annual Report of the Foundation for our 2020 – 2021 operations and finances to stakeholders.

Regards



Richard Dougan  
Chairman

## BCEF FUNDING SNAPSHOT

**\$2.5m**

**Funding granted  
since 1965**

**2,500**

**Students assisted**

**\$165k**

**Funding for  
Bursaries &  
Scholarships  
in 2021**

**95%+**

**Donations go  
to Bursaries &  
Scholarships**

## PERFORMANCE AGAINST OBJECTIVES

Despite the many disturbances and interruptions in our lives due to Covid-19, droughts and floods, Bush Children's Education Foundation has flourished over the past 12 months. Covid-19 has not stopped the ongoing functioning of the Finance, Administration and Investment; Fundraising and Marketing; and Education committees. Budgets have been met amid the greater awareness of our offering and an increasing number of applications from those isolated NSW families in need. We have:



**Significantly increase our total revenue and support**

Total revenue received and support funded has increased by 200% since 2015.



**Maximise the number of appropriate applications for support and assess suitability equitably.**

Applications for Bursaries and University scholarships have increased by 200% in the past two years.



**Engage with organisations which can assist in identifying needs, requirements and priorities and enable solutions.**

Achieved a significant increase in the number of organisations that BCEF interacts with, works with, and has presented to.



**Monitor and assess current and future trends in all aspects of BCEF operations and activities.**

All areas of BCEF operations are assessed on a regular basis with constant improvements being achieved.



**Continually improve the direction, management, and support of BCEF.**

While the membership of the BCEF Board has changed very little over the past five years with one Director retiring and one joining all Directors have contributed on a regular basis to the improvement of operations, performance and the extension of our scholarship and bursary programs with commensurate fundraising activities.



## CONTINUING NEED FOR BCEF SUPPORT



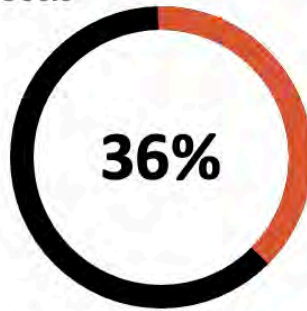
are struggling with the enormity of the drought and education costs



have not sent their children to boarding school



have removed their children from boarding school



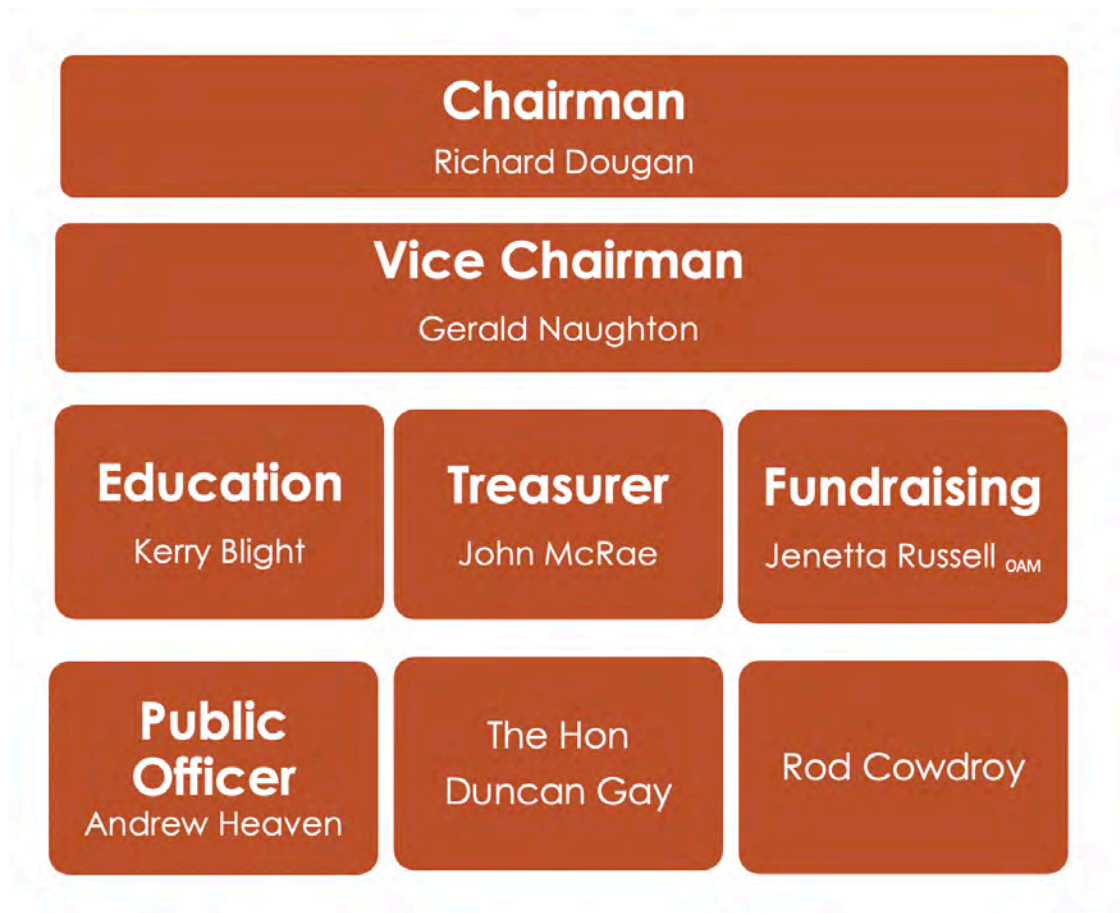
are already on boarding school payment plans, increasing overdrafts, borrowing from family or working second jobs



of families are not participating in extracurricular school activities

Source: ICPA research 2019

## BCEF BOARD OF DIRECTORS



The BCEF Board has a great diversity of skills to manage and operate on a volunteer basis.

- Commercial and Not-For-Profit management, strategy, and administration
- Investment, funds management, public accounting, international finance and financial planning
- Rural and regional infrastructure planning and investment
- Education - Secondary, TAFE, and University
- Media, journalism, radio, and broadcasting
- Fundraising and grants management
- Agriculture and farm management
- Digital and social media



## EDUCATION, SCHOLARSHIPS & BURSARIES COMMITTEE

In 2021 BCEF received more than 100 applications from which 74 secondary bursaries were awarded to attend 13 NSW regional Boarding Schools at a total cost of \$140,000. A further \$10,666 was awarded for University Scholarships.

### Secondary Boarding School Support

Bursaries awarded to secondary school students have allowed the recipients to attend 145 regional boarding schools. Since our establishment, we have had ongoing strong support from the below schools.

### Rural Boarding Schools Supported in 2021

School	Students
Calrossy Anglican School, Tamworth	4
Farrer Memorial Agricultural High School, Tamworth	14
Kildare Catholic College, Wagga Wagga	4
Kinross Wolaroi School, Orange	2
Macquarie Anglican Grammar School, Dubbo	1
Mater Dei Catholic College, Wagga Wagga	6
Presbyterian Ladies College, Armidale	1
Red Bend Catholic College, Forbes	20
Scots All Saints, Bathurst	10
Snowy Mountains Grammar School, Jindabyne	2
St Francis de Sales Regional College, Leeton	1
The Armidale School, Armidale	2
Yanco Agricultural High School, Yanco	7
<b>Grand Total</b>	<b>74</b>

### University Scholarships

This year BCEF have funded 5 University scholarships for Charles Sturt University students (Wagga Wagga, Dubbo & Bathurst campuses) at a cost of \$3,333 per student. The students are undergoing degrees in Veterinary Science, Animal Science, Bachelor of Education (Early Childhood and Primary) and all have a keen interest in establishing careers in regional NSW.



## FUNDRAISING & MARKETING COMMITTEE

We are forever grateful to our ongoing corporate and individual donors, some of whom have been with us since our establishment in 1965.



**Commonwealth**Bank




---

### Website and Social Media

2020/21 has been a big year for 'Brand BCEF' with the design, planning & launch of our new website [www.bcef.org.au](http://www.bcef.org.au) resulting in wide growth and penetration of the four social media platforms -



Twitter



Facebook



Instagram



LinkedIn

The results have been palpable, increasing the awareness of assistance we offer our struggling communities and the population at large.

Since the launch of the new BCEF website and related redesigned social media look we have now attracted more fans and followers.

**BCEF**  
Bush Children's Education  
Foundation of NSW

HOME PUBLICATIONS & NEWS APPLY FOR ASSISTANCE DONATE TO BCEF TESTIMONIALS GALLERY

**Donate Today** [Donate](#)

## 'Supporting isolated and economically disadvantaged young people in the bush'

The Bush Children's Education Foundation was founded more than 50 years ago, and over that time we have helped thousands of families living in remote and inaccessible areas of the bush to gain access to educational opportunities for their children and help them to achieve their career goals.

Families out in the bush face extreme climatic conditions, extensive droughts and difficult economic and market conditions...so we are here to help them by supporting their educational needs for their children out in the bush, helping send them to School and giving them the opportunities to achieve their dreams and in doing so ..... keeping people and skills in the bush.

*"It has been both hard emotionally and financially due to the drought. Your assistance is very much appreciated".*  
- Parent of child to BCEF recipient

CONNECT WITH US: [f](#) [in](#) [ig](#)

All Donations over \$2 are tax deductible

Donate and Support us today

Apply for Assistance [Donate](#)

REGISTERED CHARITY

Let's Chat!

Average 400 visitors to the website per month

50% originating from Facebook

Many NSW regional parents' & children's groups embracing BCEF, with individual posts being shared over 42 times and reaching 3,200 fans.

Our social media outreach finding new partners such as "Motherhood" with 4,000 listeners in our potential isolated cohort

## GROWTH PATH AND THE FUTURE

With an increasing awareness of the challenges of ESG (Environmental, Social & Governance) issues globally, the BCEF Board is looking to the future to meet these increasing demands on our isolated regional communities.

We are fortunate to have a growing level of support from our donors, and thus can be truly committed to build, grow, and widen the outreach we believe the Bush Children's Education Foundation can give.

The 2021-26 Strategic Plan is currently being developed to describe the length and breadth of our vision, mission, goals, and focus. We are looking to the horizon to grow and flourish!





## BCEF FUNDING MAKING A DIFFERENCE!



### TOM'S STORY

*"I am so grateful for the funds BCEF provided as they allowed me to stay at school throughout the drought and financial hardship of the past few years. I know that without your help I wouldn't have been able to continue my schooling in Bathurst and I'm so grateful and thankful for your selfless support."*

### JOHN'S STORY

*"Please accept my thanks to you and the Board of Trustees, for the accommodation bursary granted to our son, John. This drought has set us back considerably and we're not out of the woods yet. John is coping very well with his new school and is enjoying boarding at Allison House. The social interaction with the other children and the sporting opportunities certainly help to make up for not being at home."*



### GEORGINA'S STORY

*"We would like to thank you very much for awarding the BCEF bursary to our daughter Georgina for 2021 and are very grateful for the contribution to the increasing costs of boarding school."*

### JOANNE'S STORY

*"We feel most grateful for your generosity to our family over the past three years ... It is a reality check for Andrew and I to realise that just as loving, caring and supporting as we are...kids need friends, sport, music fun and challenges. For us ... Scots All Saints College, Bathurst is providing these."*



### ANNABEL'S STORY

*"Thank you very much for taking us into consideration for the bursary. The monies paid will make life a little easier on the farm and we appreciate it greatly."*

## BCEF FINANCIALS FY 2021

Bush Children's Education Foundation  
of New South Wales Incorporated  
ABN 74 263 035 680

### Financial Report for the Year Ended 30 June 2021

	Note	30-Jun-21 \$	30-Jun-20 \$
<b>Current Assets</b>			
Cash and Cash Equivalents	2	408,536	429,714
Receivables	3	2,205	1,743
<b>Total Current Assets</b>		<u>410,741</u>	<u>431,457</u>
<b>Non-Current Assets</b>			
Other Financial Assets	4	336,301	288,192
<b>Total Non-Current Assets</b>		<u>336,301</u>	<u>288,192</u>
<b>Total Assets</b>		<u>747,042</u>	<u>719,649</u>
<b>Current Liabilities</b>			
Accrued Expenses	5	1,800	1,800
<b>Total Current Liabilities</b>		<u>1,800</u>	<u>1,800</u>
<b>Net Assets</b>		<u>745,242</u>	<u>717,849</u>
<b>Members' Funds</b>			
Accumulated Surplus		<u>745,242</u>	<u>717,849</u>
<b>Total Members' Funds</b>		<u>745,242</u>	<u>717,849</u>

The above Statement of Financial Position should be read in conjunction with the accompanying notes



## Statement of Comprehensive Income for the Year Ended 30 June 2021

	Note	30-Jun-21 \$	30-Jun-20 \$
<b>Income</b>			
Donations / Grants Received	1	157,818	184,308
Interest Received		2,899	4,284
Income Distribution		9,757	9,983
<b>Total Trading Income</b>		<u>170,474</u>	<u>198,575</u>
<b>Operating Expenses</b>			
<b>Bursaries Scholarships and Grants</b>			
Secondary School Bursaries for Accommodation		129,475	52,500
Scholarships - University		14,001	10,667
Youth Program & Other Sponsorships		15,000	-
		<u>158,476</u>	<u>63,167</u>
<b>Trading Profit</b>		11,998	135,408
Unrealised Gain/(Loss) on Revaluation of Investments		39,211	(11,638)
<b>Total Income</b>		<u>51,209</u>	<u>123,770</u>
<b>Administration Expenses</b>			
Advertising		727	1,000
Audit Fees		1,600	1,750
Bank Charges		102	(76)
Insurance		1,728	1,697
Management Fees		1,054	1,013
Marketing and Social Media		5,473	1,406
Printing, Postage & Stationery		434	1,710
Registration Fees & Subscriptions		146	75
Serviced Office & Secretarial Fees		11,747	6,931
Telephone		89	-
Web Design & Maintenance		716	218
<b>Total Expenses</b>		<u>23,816</u>	<u>15,724</u>
<b>Net Profit / (Loss)</b>		<u>27,393</u>	<u>108,046</u>
Opening Retained Profits		717,849	609,803
Net Profit Attributable to the Association		27,393	108,046
<b>Closing Retained Profits</b>		<u>745,242</u>	<u>717,849</u>

The above Statement of Comprehensive Income should be read in conjunction with the accompanying notes

## Notes to The Financial Statements for the Year Ended 30 June 2021

### 1: Summary of Significant Accounting Policies

This financial report is a special purpose financial report prepared in order to satisfy the financial reporting requirements of the Associations Incorporations Act. The Committee has determined that the Bush Children's Education Foundation of New South Wales Incorporated (the 'Association') is not a reporting entity.

The financial report has been prepared on an accruals basis and is based on historical costs and does not take into account changing money values or, except where specifically stated, current valuations of non-current assets.

The following significant accounting policies, which are consistent with the previous period unless otherwise stated, have been adopted in the preparation of this financial report.

#### (a) Cash and Cash Equivalents

Cash and cash equivalents include cash on hand, deposits held at call with banks, and other short-term highly liquid investments with original maturities of three months or less.

#### (b) Revenue and Other Income

Revenue is measured at the fair value of the consideration received or receivable after taking into account any trade discounts and volume rebates allowed. For this purpose, deferred consideration is not discounted to present values when recognising revenue.

Interest revenue is recognised using the effective interest rate method, which for floating rate financial assets is the rate inherent in the instrument. Dividend revenue is recognised when the right to receive a dividend has been established.

Grant and donation income is recognised when the entity obtains control over the funds, which is generally at the time of receipt.

All revenue is stated net of the amount of goods and services tax (GST).

#### (c) Goods and Services Tax

Revenues, expenses and assets are recognised net of the amount of GST, except where the amount of GST incurred is not recoverable from the Tax Office. In these circumstances, the GST is recognised as part of the cost of acquisition of the asset or as part of an item of the expense. Receivables and payables in the assets and liabilities statement are shown inclusive of GST.

#### (d) Investments

Investments held are originally recognised at cost, inclusive of transaction costs. They are subsequently measured at fair value which is equivalent to their market bid price at the end of the reporting period. Movements in fair value are recognised through an equity reserve.

**2. Cash and Cash Equivalents**

	30-Jun-21 \$	30-Jun-20 \$
Commonwealth Bank General Account	23,868	102,498
Commonwealth Bank Gift Fund Account	108,662	150,891
Cash Account - North Portfolio (National Mutual Funds Limited)	969	1,164
Teachers Mutual Bank - Term Deposits	275,000	175,000
Cash on Hand	37	161
<b>Total Cash and Cash Equivalents</b>	<u>408,536</u>	<u>429,714</u>

**3. Receivables**

GST Refundable	2,205	1,743
<b>Total Receivables</b>	<u>2,205</u>	<u>1,743</u>

**4. Financial Assets - Non Current**

Shares in Other Companies	10	10
Units in Unlisted Trust	336,291	288,182
<b>Total Financial Assets</b>	<u>336,301</u>	<u>288,192</u>


**5. Accrued Expenses**

Audit Fees	1,800	1,800
<b>Total Accrued Expenses</b>	<u>1,800</u>	<u>1,800</u>

**Auditor's Independence Declaration****To the Responsible Entities of the Bush Children's Education Foundation of New South Wales Incorporated**

In accordance with the requirements of section 60-40 of the Australian Charities and Not-for-profits Commission Act 2012, as lead auditor for the audit of the Bush Children's Education Foundation of New South Wales Incorporated for the year ended 30 June 2021, I declare that, to the best of my knowledge and belief, there have been no contraventions of any applicable code of professional conduct in relation to the audit.

McCormack & Partners  
Chartered Accountants



Christine McCormack  
Chartered Accountant

Gordon, 13 September 2021



## DIRECTORS DECLARATION

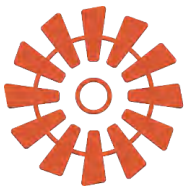
I certify that:

- a) I attended the annual general meeting of the Association held on 7 September 2021; and
- b) The financial statements for the year ended 30 June 2021 were submitted to the members of the Association at its annual general meeting and approved by the Board.

Dated 7 September 2021



Chairman - Richard Dougan



**BCEF**

Bush Children's Education  
Foundation of NSW

ABN 74 263 035 680

Email: [info@bcef.org.au](mailto:info@bcef.org.au)  
Website: [www.bcef.org.au](http://www.bcef.org.au)  
Tel: +61 492 878 622  
Address: PO Box 138  
Lindfield, NSW 2070

# SUPPORT US & MAKE A DIFFERENCE

We want to say **thank you** to all our donors who generously support us in helping young people attend school & university.

BCEF does not receive any government support, rather we rely on private and corporate donations to fund our bursary and scholarship programs for eligible students. Our operational costs are offset by investment earnings and grants specifically provided to assist our operations.

Your donation will help families in isolated regions of NSW who are suffering from hardship due to natural disasters (drought, floods, and fire) and economic disasters (such as Covid-19 pandemic) to send their children to secondary school and/or university and change their life forever.

Please continue to support us with a donation:

## Direct Deposit

Name: Bush Children's Education Foundation  
BSB: 062-195 Account Number: 10104674  
Reference: Your Name

## PayPal

Visit [www.bcef.org.au](http://www.bcef.org.au) and click the yellow donate button to access the PayPal BCEF donation page.

## Cheque

Payable to Bush Children's Education Foundation of NSW.  
Post to PO Box 138, Lindfield, NSW, 2070.

BCEF is a Registered Charity with tax deductible status as a Deductible Gift Recipient (DGR), where donations over \$2 are tax deductible.



**BCEF**  
Bush Children's Education  
Foundation of NSW  
ABN 74 263 035 680

Email: [info@bcef.org.au](mailto:info@bcef.org.au)  
Website: [www.bcef.org.au](http://www.bcef.org.au)  
Tel: +61 492 878 622  
PO Box 138, Lindfield NSW 2070